

LIFT YOU UP

AS PERFORMED BY SARAH KELLY

SARAH KELLY, JONAS EKMAN
ERIK MJOERNELL, MITCH DANE

♩ = 78

INTRO

G^M



KICK, SNARE, GUIT, KEYS



3 BASS, GUITAR LINE FULL DRUMS IN

VERSE 1,2

G^M



7

F C G^M F C



11

PRE-CHORUS

E^b B^b G^M E^b C^M D7



15

1X PLAY THORUGH, 2X BREAK

CHORUS 1,2

G^M C G^M C



19

INTERLUDE

1 G^M F C G^M F C



23

BRIDGE

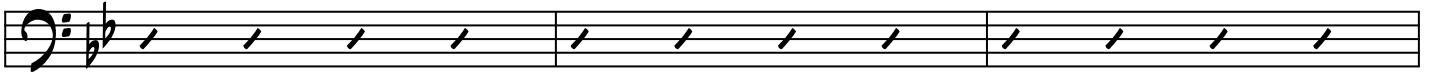
2 A^b E^b B^b A^b E^b B^b



27

(LIFT YOU UP) P. 2

A^b E^b B^b A^b E^b



31

BREAKDOWN

G^M C G^M C



34

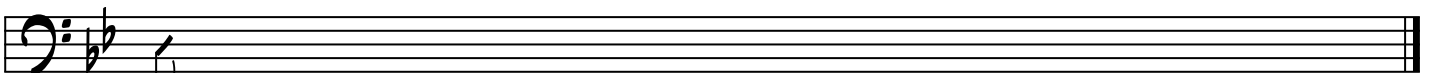
CHORUS 3

G^M C G^M C



38

G^M



42